

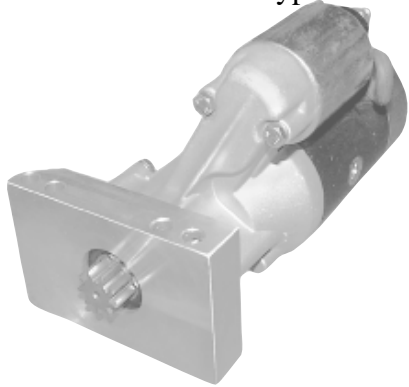
# *Component Parts for* **CHEVY RACE CAR** **STARTER**



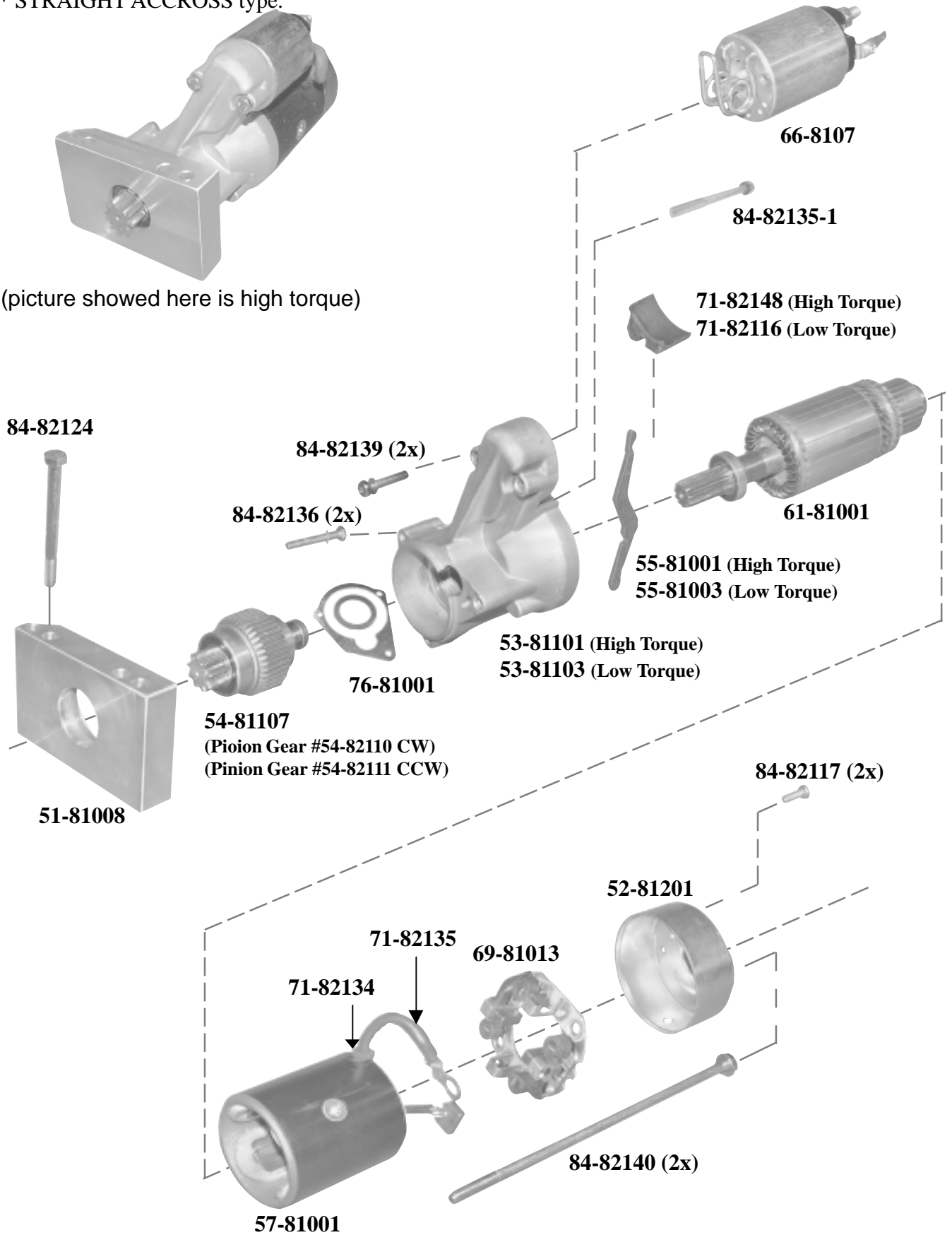
Metro Auto Industrial Inc.  
Toll Free: 1-800-263-8761

# Assembly Diagram

\* STRAIGHT ACCROSS type.

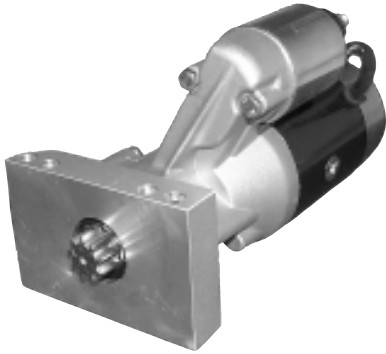


(picture showed here is high torque)



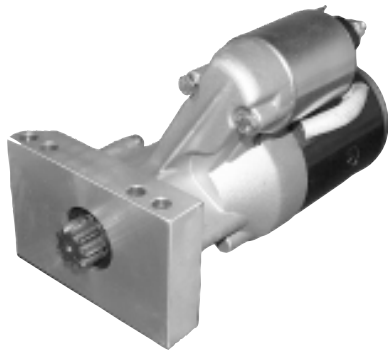
## 165841-H

**HOTTEST  
SALE**



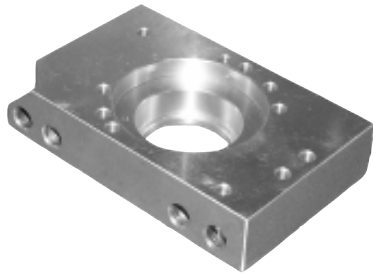
- High Torque, 2.0kw
- Fits 153 & 168 Fly Wheel Engine
- 100% Brand New
- Premium Quality
- Aluminum Alloy DE Housing, for more Strong Vibration
- All Replace Parts Available
- Out Right Price
- Volume Discount Price Available

## 165841-L



- Low Torque, 1.4kw
- Fits 153 & 168 Fly Wheel Engine
- Rebuilt Unit
- Use New Aluminum Alloy DE Housing for Strong Vibration
- Premium Quality
- Replace Parts Available
- Out Right Price

# Components for Chevy Race Car Starter



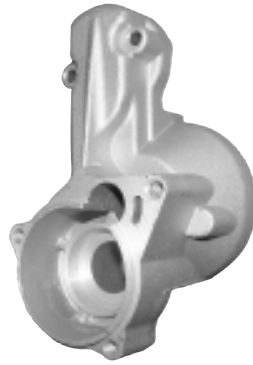
**51-81008**  
**DE Housing**

**For:** Hitachi Conversion  
1.4kw & 2.0kw

**Lester:**

**Dim.:**

**Note:** Aluminum Alloy for Strong  
Torque use. High Heat  
Treated.



**53-81101**

**Center Support Housing**

**For:** Hitachi 2.0kw

**Lester:** 16584

**Dim.:**

**Note:** for low torque starter use  
53-81103



**54-81107**

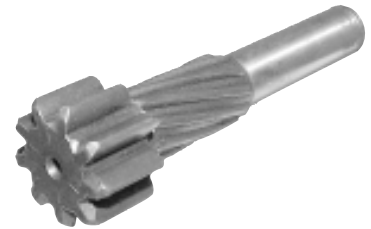
**Drive, 9-T, CW**

**For:** Hitachi 2.0kw

**Lester:** 17018,17138

**Dim.:** 25.5mm Gear OD,  
87.3mm OAL

**Note:** Pinion Gear use 54-82110



**54-82110**

**Pinion Gear**

**9-T, CW, 10-SPL**

**For:** Hitachi 1.4kw, 2.0kw

**Lester:** 17018,17138

**Dim.:** 25.3mm Gear OD,  
87.3mmOAL

**Note:** CCW use 54-82111



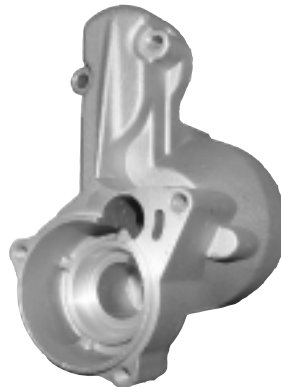
**52-81201**  
**CE Plate**

**For:** Hitachi 1.8kw & 2.0kw

**Lester:**

**Dim.:** 79.3mm OD

**Note:**



**53-81103**

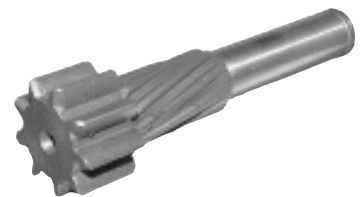
**Center Support Housing**

**For:** Hitachi 1.4kw

**Lester:**

**Dim.:**

**Note:** for high torque starter use  
53-81101



**54-82111**

**Pinion Gear**

**9-T, CCW, 10-SPL**

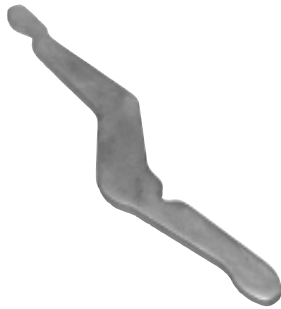
**For:** Hitachi 1.4kw, 2.0kw

**Lester:**

**Dim.:** 25.3mm Gear OD,  
87.3mm OAL

**Note:** CW use 54-82110;  
Can be use as marine  
starter, need change field  
coil to CCW, Brush Holder  
also need to change to  
CCW.

# Components for Chevy Race Car Starter



**55-81001**  
**Shift Lever**

**For:** Hitachi 2.0kw, OSGR

**Lester:**

**Dim.:** 3.8mm Thick  
108.5mm OAL

**Note:** for low torque starter use  
55-81003



**57-81001**  
**Field Case Assembly**  
**12 Volt, CW**

**For:** Hitachi 2.0kw

**Lester:**

**Dim.:** 91mm Height

**Note:** with Field Coil & two Brush



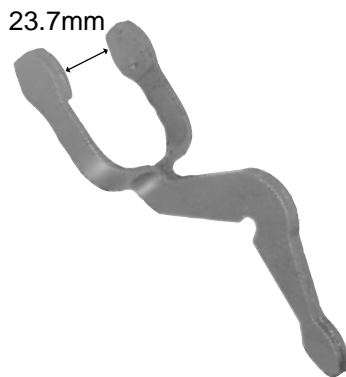
**66-8107**  
**Solenoid Switch**  
**12 Volt, 3-Terminal**

**For:** Hitachi 2.0kw

**Lester:**

**Dim.:**

**Note:** Batt. Term. M8x1.25  
Motor Term. M8x1.25  
Switch Term. Male Spade



**55-81003**  
**Shift Lever**

**For:** Hitachi 1.4kw

**Lester:**

**Dim.:** 85.5mm OAL

**Note:** for high torque starter use  
55-81001



**61-81001**  
**Armature, cw**

**For:** Hitachi, Thermo King 2.0kw

**Lester:**

**Dim.:** 188.4mm OAL

**Note:** with both side Bearing.

Read OD: 17mm

Front OD: 8mm

Commutator OD: 36.5mm OD



**66-8107C**  
**Cap - Solenoid**  
**12 Volt, 3-Terminal**

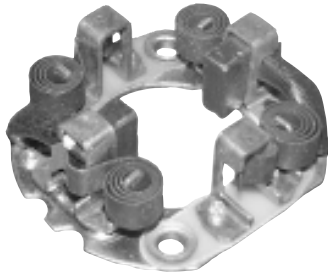
**For:** Hitachi 2.0kw

**Lester:**

**Dim.:**

**Note:** Batt. Term. M8x1.25  
Motor Term. M8x1.25  
Switch Term. Male Spade

# Components for Chevy Race Car Starter



**69-81013**  
**Brush Holder Assembly**  
**12 Volt, CW**

**For:** Hitachi 2.0kw

**Lester:**

**Dim.:**

**Note:** wo/Field Brush  
Diesel Engine use, such as  
Chevrolet, Isuzu, Nissan,  
Pontiac, Thermo King



**71-82148**  
**Dust Cover**  
**- CS Housing to Solenoid**

**For:** Hitachi 2.0kw

**Lester:**

**Dim.:** 23.5mm Height,  
38mm Width

**Note:** for low torque starter use  
71-82116;  
also used on 53-81106,  
53-81107, 53-81108



**71-82135**  
**Tube**  
**- Terminal Wire**

**For:** Hitachi 2.0kw

**Lester:**

**Dim.:** 7mm ID  
8mm Neck  
88mm OAL

**Note:**



**71-82116**  
**Dust Cover**  
**- CS Housing to Solenoid**

**For:** Hitachi 1.2kw & 1.4kw

**Lester:**

**Dim.:** 38mm Height,  
38.5mm Width

**Note:** for high torque starter use  
71-82148



**71-82134**  
**Grommet**  
**- Terminal Lead**  
**to Field Case**

**For:** Hitachi 2.0kw

**Lester:**

**Dim.:** 9mm ID  
11mm Neck  
13mm Height

**Note:**



**76-81001**  
**Shim & Washer set**

**For:** Hitachi 2.0kw

**Lester:**

**Dim.:** 1.7mm Thick

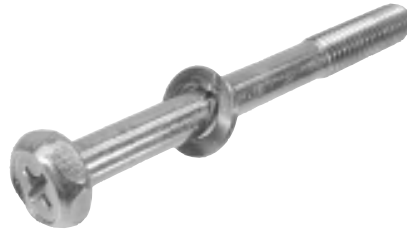
**Note:**

# Components for Chevy Race Car Starter



**84-82117**  
**Screw**  
**Brush Holder Assy.**

**Lester:**  
**Dim.:** M4 x 0.7  
10mm OAL  
**Note:**



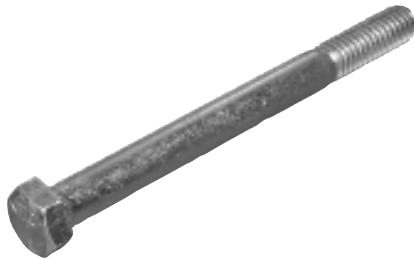
**84-82135-1**  
**Bolt**  
**DE Housing**  
**to CS Housing**

**Lester:**  
**Dim.:** M6 x 1.0  
60mm OAL  
20mm Thread Length  
**Note:**



**84-82139**  
**Screw**  
**CS Housing**  
**to Solenoid**

**Lester:**  
**Dim.:** M6 x 1.0  
32mm OAL  
**Note:**



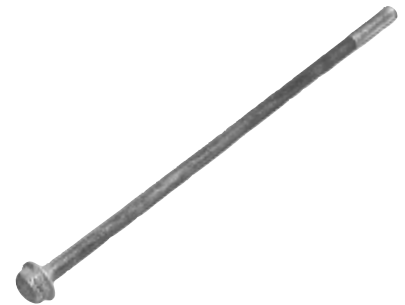
**84-82124**  
**Thru Bolt**  
**DE Housing**

**Lester:**  
**Dim.:** M10 x 1.50  
101mmL  
**Note:** Zinc Plated



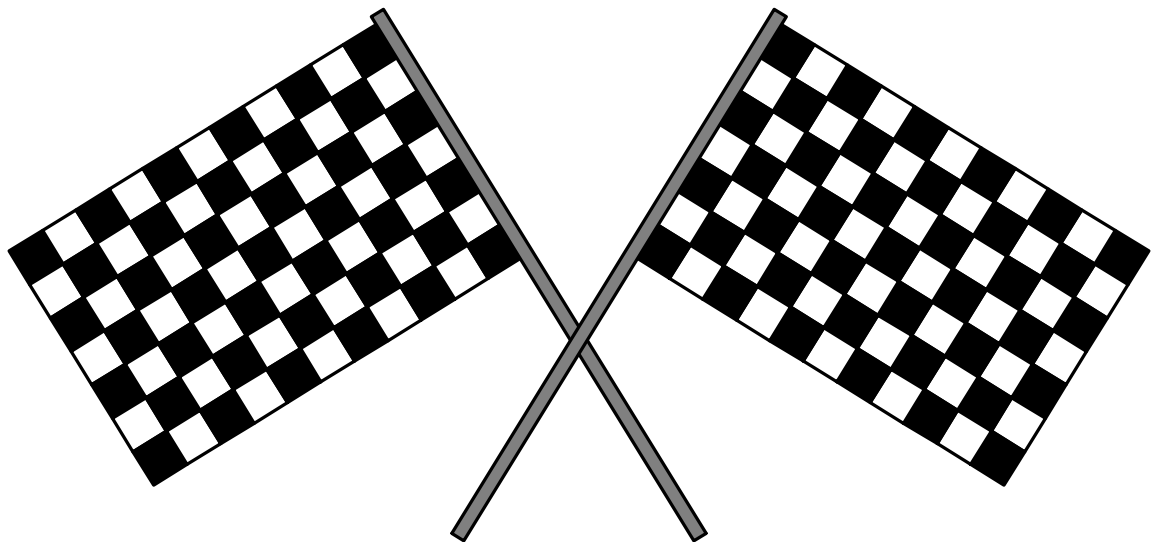
**84-82136**  
**Screw**  
**DE Housing**  
**to CS Housing**

**Lester:**  
**Dim.:** M6 x 1.0  
40mm OAL  
**Note:**



**84-82140**  
**Thru Bolt**  
**CE Plate**  
**to CS Housing**

**Lester:**  
**Dim.:** M5 x 0.8  
142mm OAL  
**Note:**



## Metro Auto Industrial Inc.

2128 Pomona Boulevard • Pomona • CA 91768-3332

Phone:(909)629-2700 • Fax:(909)629-2721

**Toll Free: 1-800-263-8761**

**Toll Free Fax: 1-800-799-0838**

[www.metroautoinc.com](http://www.metroautoinc.com)

Technical [tech@metroautoinc.com](mailto:tech@metroautoinc.com)

Information [info@metroautoinc.com](mailto:info@metroautoinc.com)

Accounting [acco@metroautoinc.com](mailto:acco@metroautoinc.com)

Care is taken to ensure the accuracy of photo, descriptions and applications of each items,  
but Metro Auto Industrial Inc. assumes no responsibility for possible errors.

All the OE number and Lester number are for referece use only.