

Motorcycle Alternator & Starter

for
Bosch & Denso



Metro Auto Industrial Inc.

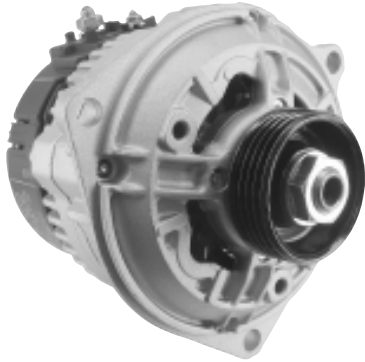
Toll Free: 800-263-8761

Index

12494R	Bosch Alternator, 12V, 50 Amp	5
HD-0101	Silver Type, 1.2kw, 1.4kw	5
HD-0100	Silver Type, 1.2kw, 1.4kw	6
17352B	Steel Back, 1.0kw	7
17617	Silver Type, 1.2kw, 1.4kw	8
176291	Silver Type, 1.2kw, 1.4kw	9
176322	Silver Type, 1.2kw, 1.4kw	10
182002B	Steel Back, 1.0kw	11
18199C	Silver Type, 1.2kw, 1.4kw	12
18477	Silver Type, 1.2kw, 1.4kw	13
18905N-C	Silver Type, 1.2kw, 1.4kw, Chrome	14
18905N-B	Silver Type, 1.2kw, 1.4kw, Black	15
18906	Gold Case, 2.0kw	16
18907	Gold Case, 2.0kw	17
HD-0103	Gold Case, 2.0kw	19
HD-0110	Silver Type, 1.8kw	20
HD-0111		21
HD-0200C	Waffle Type, 1.6kw	22

Motorcycle Alternator & Starter

Metro# 12494R



Original Type: Bosch
Volt: 12
Power: 50 Amp
Pulley: 4 Groove
Rotate: CW
Lester: 12494
PIC: 220-5569

OE: 0-123-105-001
Volt: 12
Power: 50 Amp
Pulley: 4 Groove
Rotate: CW
Lester: 12494
PIC: 220-5569

Used on: BMW R850R, R850RT, R1150R, R1150RS, R1150GS, R1100R, R1100RS, R1100RT
1993-2007

DE:

CE:

CS:

Solenoid Housing:

Shaft:

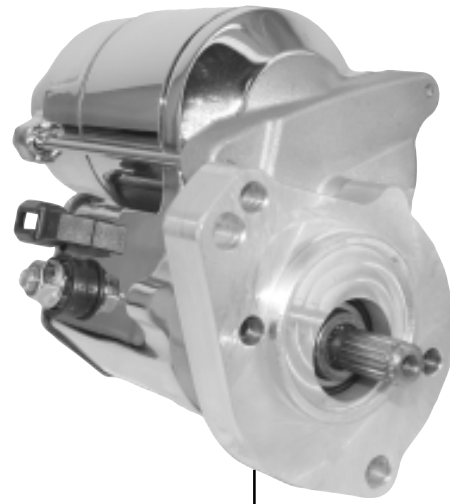
Field Case Assy:

Armature:

Note: This is Modify unit.

Harley Denso OSGR Starters

Metro# HD-0101



two pieces type Housing
(DE & CS)

Original Type: Denso OSGR, Silver Body

Volt: 12

Power: 1.4kw (or 1.2kw)

Teeth:

Rotate: CW

Lester:

PIC:

Replacement Type:

Volt: 12

Power: 1.4kw

Teeth:

Rotate: CW

Lester:

PIC:

Used on: 1989-1996 some of modern Indian Bike, Custom Bike
(89-93 use 1/4-20" Shaft; 94-96 use 10-32" Shaft)

DE: 51-82295

CE: 52-82110

CS: 53-82295

Solenoid Housing: 53-82115

Shaft: 54-82196 (1/4-20:); 54-82197 (10-32")

Field Case Assy: 57-8201

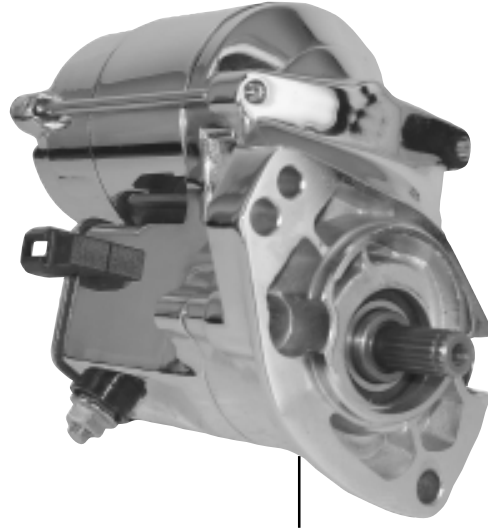
Armature: 61-8201

Note: This is Modify unit.

Motorcycle Alternator & Starter

Metro# HD-0100 (sale as 181991)

similar to 31558-94



Improved long lasting Heat Treated Clutch Assembly.

Original Type: Denso OSGR, Silver Body-
Volt: CRA
Power: 12
Teeth: 1.2kw
Rotate: CW
Lester: 17629, 18199
PIC: 190-415

Harley Davidson: 31702-98, 31553-94,
31559-99A
Denso: 228000-255
Power: 1.2kw

Used on: 1994-2006 FLHR, FXD, Dyna 1340 CC & 1350 CC

DE: 51-82220C

CE: 52-82126C

CS:

Solenoid Housing: 53-82121 (53-82121C Chrome)

Solenoid Assy: 53-8274 (53-8274C Chrome)

Shaft: 54-82196 (1/4-20:); 54-82197 (10-32")

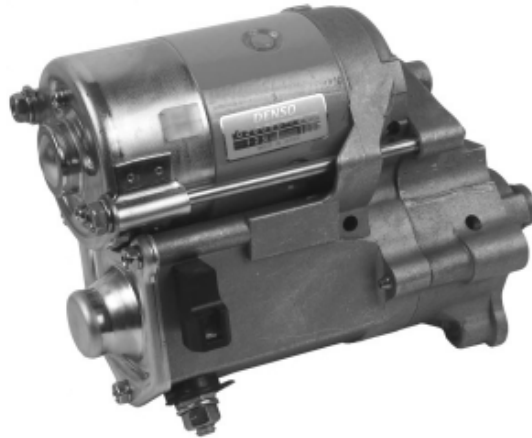
Field Case Assy:

Armature:

Note: This starter worked good with EPA approved engine (S&S Engine & TP Engine).
Similar to 31558-94.
Same unit HD-0100C (Chrome).

Harley Denso OSGR Starters

Metro# 17352B



Original: Denso OSGR, SSteel Back
(LRA)

Replace: Denso 028000-730
Harley Davidson 31505-81

Replacement Type: Denso OSGR, Steel Back

Volt: 12

Power: 1.0kw

Teeth: 9 (mm)

Rotate: CW

Lester: 17352

PIC: 190-6020

Used on: Harley Davidson

DE: 51-82217

CE: 52-82102

Brush Holder:

Solenoid Housing:

Solenoid Assy:

Gear: 54-82101

Field Case Assy:

Armature:

Note: This is early type 1.0kw steel back.
Painted Black.

Motorcycle Alternator & Starter

Lester# 17617



Original: Denso OSGR, Steel Back
Replace: Denso 128000-575
Harley Davidson 31570-89
31570-89A

Replacement Type: Denso OSGR, Steel Back
Volt: 12
Power: 1.0kw
Teeth: use 1/4-20" Shaft
Rotate: CW
Lester: 17617
PIC: 190-416

Used on: Harley Davidson 1989-1990 1340CC

DE: 51-82220

CE: 52-82101

Brush Holder:

Solenoid Housing:

Solenoid Assy:

Gear: 54-82196 (1/4-20") Shaft

Field Case Assy:

Armature:

Note: There are two type of this starters, one is 1.0kw, steel back (OE type), the other one is 1.2kw or 1.4kw, silver type. Picture show here is 1.2kw silver type.

Harley Denso OSGR Starters

Lester# 176291



Original: Denso OSGR, Silver Body
(CRA)

Replace: Denso 128000-822
Harley Davidson 31553-90
31558-90

Replacement Type: Denso OSGR, Silver Body

Volt: 12

Power: 1.2kw

Teeth: use 1/4-20" Shaft

Rotate: CW

Lester: 17629

PIC: 190-410

Used on: Harley Davidson Big Twin 1340CC 1991-1993

DE: 51-82220 (51-82220C Chrome)

CE: 52-82101

Brush Holder:

Solenoid Housing:

Solenoid Assy:

Gear: 54-82196 (1/4-20") Shaft

Field Case Assy:

Armature:

Note: This unit use early style Shaft 1/4-20" Shaft.

This unit same as HD-1000, only HD-0100 is 1.4kw.

We also has Metro# HD-0111, 1.8kw silver type.

Motorcycle Alternator & Starter

Lester# 176322 (176322B)



Original: Denso OSGR, Silver Body
(LRA)

Replace: Denso 128000-845
Harley Davidson 31391-91
31391-91A

Replacement Type: Denso OSGR, Silver Body

Volt: 12

Power: 1.2kw

Teeth: 9 (mm)

Rotate: CW

Lester: 17632

PIC: 190-341

Used on: 1991-on Sportster 883CC & 1200CC

DE: 51-82267

CE: 52-821015

Brush Holder:

Solenoid Housing:

Solenoid Assy: 54-82101

Gear:

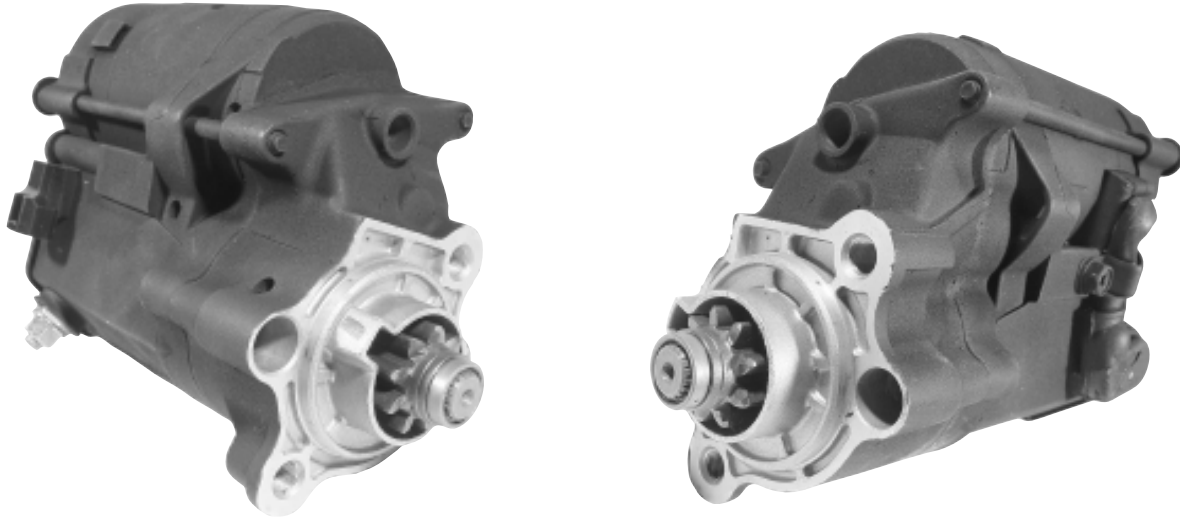
Field Case Assy:

Armature:

Note: This unit similar to 17352 & 18200, but 17352 & 18200 are 1.0kw, steel back type.
We also have 17632B (black painted) available.

Harley Denso OSGR Starters

Metro# 182002B



Original: Denso OSGR, Steel Back
Replace: Denso
Harley Davidson 31390-91
31390-91A

Replacement Type: Denso OSGR, Steel back
Volt: 12
Power: 1.0kw
Teeth: 9 (mm)
Rotate: CW
Lester: 17632, 18200
PIC: 190-414

Used on: 1991-on Sportster 883CC & 1200CC

DE: 51-82217
CE: 52-821012

Brush Holder:

Solenoid Housing:

Solenoid Assy: 54-82101

Gear:

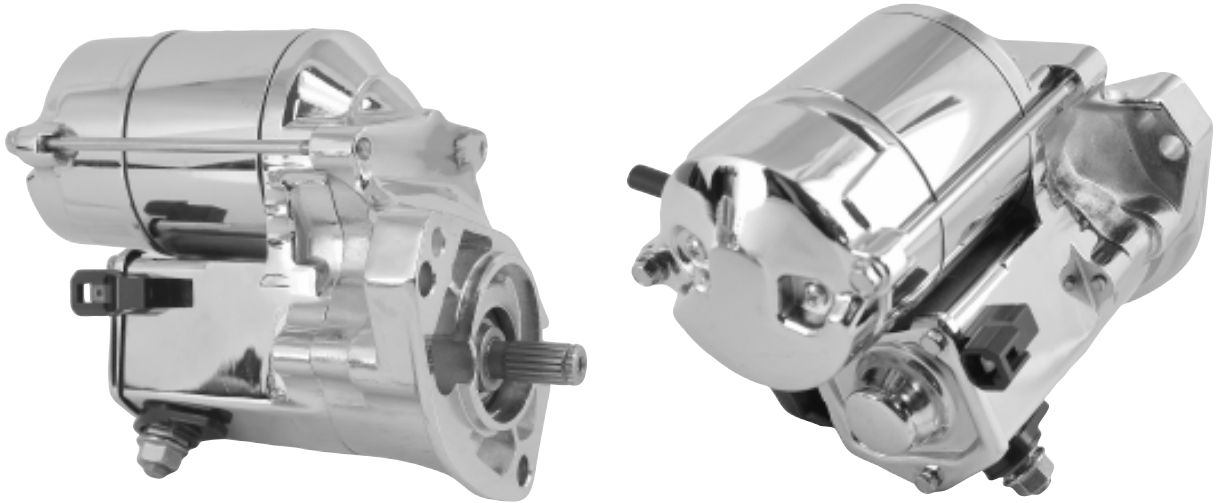
Field Case Assy:

Armature:

Note: This unit similar to 17352 (1.0kw steel back) & 17632 (1.4kw, silver).

Motorcycle Alternator & Starter

Lester# 181991C (181991)



Original: Denso OSGR, Silver Body
(CRA)

Replace: Denso 228000-255
Harley Davidson 31553-94
31559-99A

Replacement Type: Denso OSGR, Silver Body

Volt: 12

Power: 1.4kw

Teeth: use 1/4-20" or 10-32" Shaft

Rotate: CW

Lester: 18199

PIC: 190-415

Used on: 1994-2006 FLHR, FXD Dyna 1340CC & 1350CC

DE: 51-82220

CE: 52-82126

Brush Holder: 69-82107

Solenoid Housing: 53-82121

Solenoid Assy: 53-8274

Gear: 54-82196 (1/4-20"), 54-82197 (10-32")

Field Case Assy: 57-8201

Armature: 61-8201

Note: This unit same as HD-0100 (1.4kw, silver) and 17629 (1.2kw, silver).

Improved long lasting heat treated clutch Assy.

This starter worked good with EPA approved engine (S&S Engine & TP Engine).

Harley Denso OSGR Starters

Lester# 18477



Original: Denso OSGR, Silver Body
(LRA)

Replace: Denso
Harley Davidson 31390-86
31533-81

Replacement Type: Denso OSGR, Silver Body

Volt: 12

Power: 1.4kw

Teeth: 9 (mm)

Rotate: CW

Lester: 18477

PIC: 190-459

Used on:

DE:

CE: 52-82110

Brush Holder: 69-82107

Solenoid Housing:

Solenoid Assy:

Gear: 54-82101

Field Case Assy: 57-8201

Armature: 61-8201

Note: DE similar to 51-82267, but not 51-82267.

Similar to 128000-845 (17632), but 128000-845 is 1.2kw (silver).

Motorcycle Alternator & Starter

Lester# 18905N-C



Original: Denso OSGR, Silver Body
(CRA)

Replace: Denso
Harley Davidson 31619-06

Replacement Type: Denso OSGR, Silver Body

Volt: 12

Power: 1.4kw

Teeth: (mm) Wet Clutch

Rotate: CW

Lester: 18905

PIC: 190-6201

Used on: 2006-on Dyna, fits more than 8 different models, except the Sportster, Soft Tail & Touring.

DE: 52-82281

CE: 52-82126

Brush Holder:

Solenoid Housing:

Solenoid Assy: 53-8251

Gear:

Field Case Assy:

Armature:

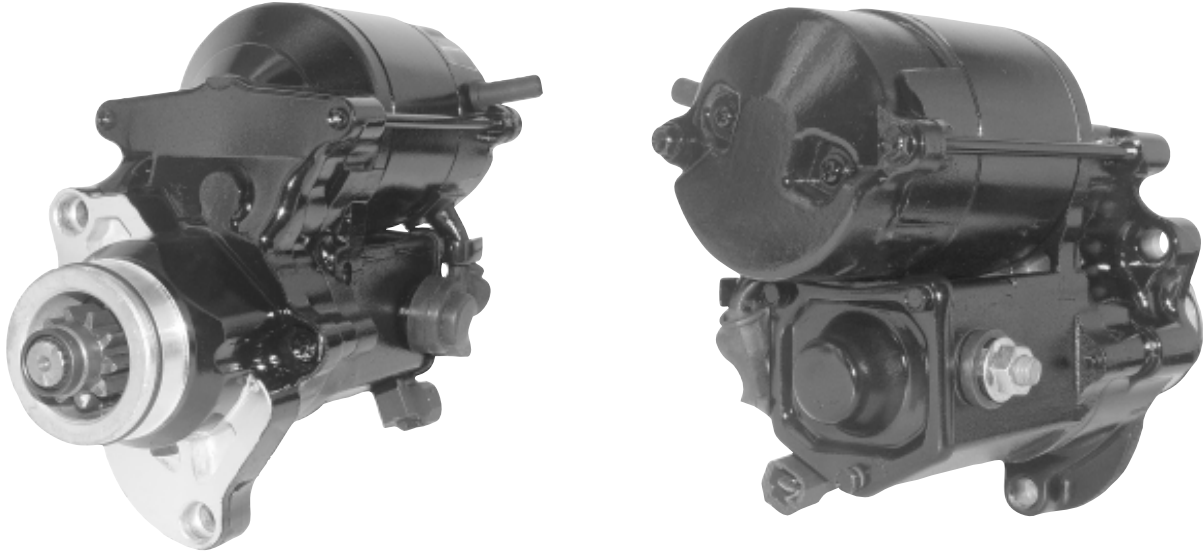
Note: This is Wet Clutch unit.

Most people use the Chrome type.

Chrome and plan type also available.

Harley Denso OSGR Starters

Metro# 18905N-B



Original: Denso OSGR, Silver Body
(CRA)

Replace: Denso
Harley Davidson 31619-06

Replacement Type: Denso OSGR, Silver Body

Volt: 12

Power: 1.4kw

Teeth: (mm) Wet Clutch

Rotate: CW

Lester: 18905

PIC: 190-6201

Used on: 2006-on Dyna, fits more than 8 different models, except the Sportster, Soft Tail & Touring.

DE: 52-82281

CE: 52-82126

Brush Holder:

Solenoid Housing:

Solenoid Assy: 53-8251

Gear:

Field Case Assy:

Armature:

Note: This is Wet Clutch unit.

Most people use the Chrome type.

Chrome and plan type also available.

Motorcycle Alternator & Starter

Lester# 18906

Original: Denso OSGR, Gold Case

Replace: Denso
Harley Davidson

Replacement Type: Denso OSGR, Gold Case

Volt: 12

Power: 1.8kw

Teeth: (mm)

Rotate: CW

Lester: 18906

PIC: 190-6203C

Used on: xx

DE:

CE:

Brush Holder:

Solenoid Housing:

Solenoid Assy:

Gear:

Field Case Assy:

Armature:

Note: Arrowhead# SHD0014-C

Harley Denso OSGR Starters

Lester# 18907



Original: Denso OSGR, Gold Case

Replace: Denso
Harley Davidson

Replacement Type: Denso OSGR, Gold Case

Volt: 12
Power: 2.4kw
Teeth: (mm)
Rotate: CW
Lester: 18907
PIC: 190-6202C

Used on: xx

DE: 51-82293

CE:

Brush Holder:

Solenoid Housing:

Solenoid Assy: 53-8273

Gear: 54-82197 (10-32") Shaft

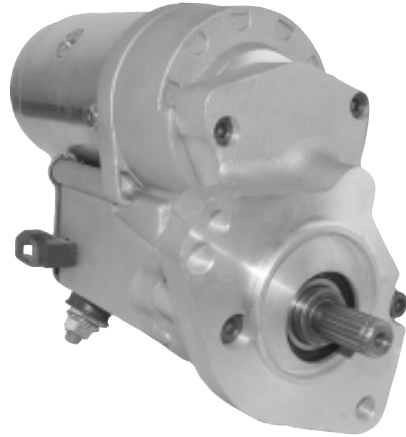
Field Case Assy:

Armature:

Note: We have 2.0kw, Gold Case type HD-0103.

Motorcycle Alternator & Starter

Metro# HD-0103



1 piece DE Housing design

Original Type: Denso OSGR, Gold Case

Volt: 12

Power: 2.0kw

Teeth: 10-32" Shaft

Rotate: CW

Lester:

PIC:

Replacement Type: Denso OSGR, Gold Case

Volt: 12

Power: 2.0

Teeth: 10-32" Shaft

Rotate: CW

Lester:

PIC:

Used on: None factory bike, basic to chopper, majority need chrom.

DE: 51-82293

CE:

CS:

Solenoid Housing:

Solenoid Assy: 53-8273

Shaft: 54-82197 (10-32")

Field Case Assy: 57-8211

Armature:

Note: This is Modify unit.

Harley Denso OSGR Starters

Metro# HD-0110

**No Photo
Available**

Original Type:

Volt:
Power:
Teeth:
Rotate:
Lester:
PIC:

Replacement Type: Denso OSGR, Waffle

Volt: 12
Power: 1.4kw
Teeth: Shaft
Rotate: CW
Lester:

Used on: Harley Davidson Custom Bike.

DE: 51-82212

CE: 52-82110

CS:

Solenoid Housing: 53-82115

Solenoid Assy:

Shaft: 54-82197 (1-32")

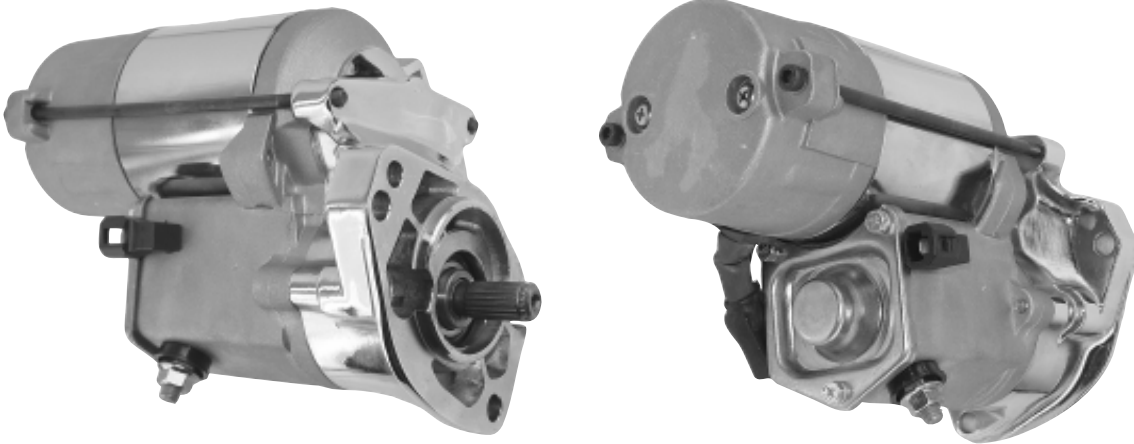
Field Case Assy: 57-8201

Armature: 61-8201

Note: For Harley Davidson.

Motorcycle Alternator & Starter

Metro# HD-0111



Original Type: Denso OSGR, 1.8kw, Silver
Volt: 12
Power: 1.8kw
Teeth:
Rotate: CW
Lester: 18446
PIC: 190-466

Replacement Type: Denso OSGR, Silver Body
Volt: 12
Power: 1.8kw
Teeth: Shaft
 1/4-20" or 10-32"
Rotate: CW
Lester:

Used on: 1994-2002 Harley 1340cc. & 1450cc.

DE: 51-82220

CE: 52-82201

CS:

Solenoid Housing: 53-82121 (53-82121C Chrome)

Solenoid Assy: 53-8274 (53-8274C Chrome)

Shaft: 54-82196 (1/4-20") or 54-82197 (10-32")

Field Case Assy: 57-8203

Armature: 61-8203

Brush Holder Assy: 69-82122

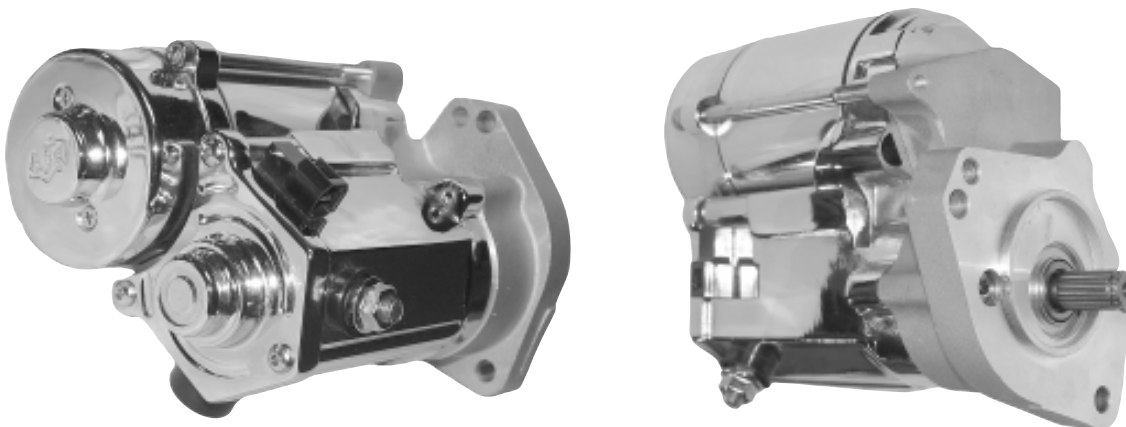
Note: The DE, Solenoid and Shaft use Silver 1.4kw type.

The Field Case Assy, Armature, CE Plate, Brush Holder use 1.8kw Silver type.

This starter worked good to X-WEDGE (custom bike).

Harley Denso OSGR Starters

Metro# HD-0200C (HD-0200)



Original Type: Harley Davidson

Volt:

Power:

Teeth:

Rotate:

Lester:

PIC:

Replacement Type: Denso OSGR, Waffle Type

Volt: 12

Power: 1.6kw

Teeth: Shaft (10-32")

CW

Rotate:

Lester:

Used on: Harley Davidson Custom Bike.

1989-up "Billet Starter"

DE: 51-82270

CE: 52-82204C

CS:

Solenoid Housing: 53-82206

Solenoid Assy: 53-8282

Shaft: 54-82197 (10-32")

Field Case Assy:

Armature:

Note: This is modify type starter.

Chrome Body, DE polished.

Motorcycle Alternator & Starter



Metro Auto Industrial Inc.

2128 Pomona Boulevard . Pomona . CA 91768-3332

Phone:(909)629-2700 . Fax:(909)629-2721

Toll Free: 1-800-263-8761

Toll Free Fax: 1-800-799-0838

www.metroautoinc.com

orders@metroautoinc.com

info@metroautoinc.com

Care is taken to ensure the accuracy of photo, descriptions and applications of each items,
but Metro Auto Industrial Inc. assumes no responsibility for possible errors.

All the OE number and Lester number are for referece use only.